



koroseal® School Collection

koroseal®
surface-scape your vision

Specifications:

Type II – 21 oz. ply
Width: 52”/54”
Backing: Non-woven
Fire Rating: Class A, ASTM E-84

Vertical Repeat: N/A
Horizontal Repeat: N/A
Installation: Random Match, Reverse Hang
Meets California Indoor Air Quality 01350 Requirements

330.668.7673
koroseal.com

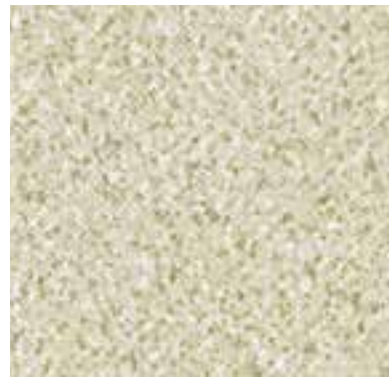
3875 Embassy Parkway • Fairlawn, Ohio 44333.
This wallcovering has Early Warning Effect Formulation. For complete specifications and hanging instructions go to koroseal.com.
© Copyright 2016. All Rights Reserved. Koroseal® and Early Warning Effect® are registered trademarks of Koroseal Interior Products, LLC.



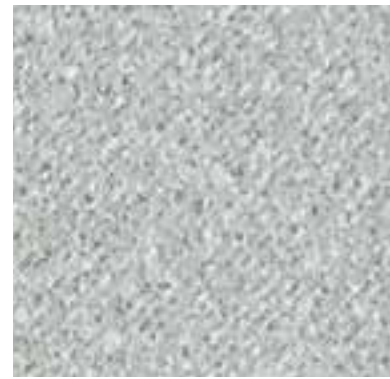
▼ Spellbound ▲



APOLLO 8821-03



WHISPERS 8821-13



DELTA 8821-71

Spellbound ▼



CHANT 8821-12



DESTINY 8821-78



FOG B321-91

▲ Ceres ▼



NANTUCKET N521-12



CHINO N521-23



GRAYSON N521-94

▲ Sonesta ▼



ATRIUM 2121-00



DESERT SHORE 2121-17



CREAM B321-15



DORSET 4821-04



RATTAN N521-10



WILLOWBROOK N521-87

▲ Chimayo ▼

▼ Harborweave ▲



SEA MIST 2121-97



MOONLIGHT 2121-92



WINTER MIST 2121-14

▼ Linden ▲



SWANSEA 4621-23



O'KEEFE WHITE C521-03



TIERRA BAYITA C521-19

▲ Muratone ▼

SEA MIST 2121-97

MOONLIGHT 2121-92

WINTER MIST 2121-14

ANCESTRAL 4621-12

ICE M621-30

ALPINE FLOWER M621-89